

MEMBERSHIP/SUBSCRIPTION REGISTRATION FORM

NAME \_\_\_\_\_ PROFESSION \_\_\_\_\_

BUSINESS NAME \_\_\_\_\_

ADDRESS \_\_\_\_\_

\_\_\_\_\_

\_\_\_\_\_

PHONE(S) \_\_\_\_\_ FAX \_\_\_\_\_

EMAIL \_\_\_\_\_ WEBSITE \_\_\_\_\_

NATURE AND EXTENT OF YOUR INTEREST IN AND/OR INVOLVEMENT WITH STONEMASONRY:

\_\_\_\_\_

\_\_\_\_\_

\_\_\_\_\_

HOW DID YOU LEARN ABOUT THE STONE FOUNDATION? \_\_\_\_\_

STONE FOUNDATION MEMBERSHIP is measured in magazines rather than months.  
New and renewing members will receive the next two issues of STONEXUS to be published

**MEMBERSHIP BENEFITS:**

Two issues of STONEXUS MAGAZINE, the occasional NEWSLETTER, the option to purchase a listing in the ON-LINE DIRECTORY at [www.stonefoundation.org](http://www.stonefoundation.org), reduced registration fees for Stone Foundation symposia, seminars, workshops and other events, discounted merchandise, a sense of community, and last, but not least the satisfaction of supporting the Stone Foundation and, thereby, the traditions of the craft of stonemasonry.

**MEMBERSHIP TYPES AND RATES:**

\_\_\_\_\_ \$50 – INDIVIDUAL MEMBER

\_\_\_\_\_ \$100 – CORPORATE/CONTRACTOR/INSTITUTIONAL MEMBER

(Employees of Contractor/Corporate/Institutional Members are entitled to an Individual Membership at a 20% discount.)

\_\_\_\_\_ \$40 – EMPLOYEE OF CORPORATE/CONTRACTOR MEMBER

Name of Contractor or Corporation Member: \_\_\_\_\_

**ALSO:**

\_\_\_\_\_ \$50 – ON-LINE DIRECTORY LISTING at [www.stonefoundation.org](http://www.stonefoundation.org)

(For 12 months, a members-only option. Enter information to be listed on page 2 of this form.)

\$ \_\_\_\_\_ BACK ISSUES OF STONEXUS – \$15 each (full set of seven issues for \$75)

INAUGURAL ISSUE\_\_\_\_, STONEXUS II\_\_\_\_, STONEXUS III\_\_\_\_, STONEXUS IV\_\_\_\_, STONEXUS V\_\_\_\_, STONEXUS VI\_\_\_\_, STONEXUS VII\_\_\_\_

FULL SET OF SEVEN ISSUES\_\_\_\_ (Table of contents and specimen articles of each issue are available at [www.stonefoundation.org](http://www.stonefoundation.org).)

\$ \_\_\_\_\_ T-SHIRTS and/or CAPS (members only, see page 2)

\$ \_\_\_\_\_ TOTAL PAYMENT (Donations are, of course, welcome)

Checks, bank drafts or money orders are to be made out in **US Dollars** to the STONE FOUNDATION and sent to 116 Lovato Lane, Santa Fe, NM 87505, USA. Personal checks on foreign banks are not acceptable. Sorry, we cannot process credit cards at this time.

To encourage foreign membership, Canadian, Mexican and overseas postal charges will be waived (except for T-shirts)

**NEWSLETTER:** Do you wish to receive the Stone Foundation newsletter? Yes \_\_\_\_\_, No \_\_\_\_\_. Via Email \_\_\_\_\_ or via USPost \_\_\_\_\_?

**MEMBERSHIP CATEGORIES** (check as many as apply) Stonemason\_\_\_\_, Dry Stone Mason\_\_\_\_, Restoration Mason\_\_\_\_, Novice\_\_\_\_, Architect\_\_\_\_, Landscape Architect/Designer\_\_\_\_, Contractor\_\_\_\_, Supplier\_\_\_\_, Quarrier\_\_\_\_, Artist\_\_\_\_, Lettering artist\_\_\_\_, Hobbyist\_\_\_\_, Historian\_\_\_\_, Archaeologist\_\_\_\_, Geologist\_\_\_\_, Engineer\_\_\_\_ Aficianado\_\_\_\_, Other\_\_\_\_\_

**INFORMATION FOR ONLINE DIRECTORY LISTING AT WWW.STONEFOUNDATION.ORG (\$50 for 12 months)**

STONEMASON MEMBERS DIRECTORY check here

ASSOCIATE MEMBERS DIRECTORY check here

Description of types of work performed, degree of experience, etc. (40 words or less). List your phone number? Yes \_\_\_\_\_ No \_\_\_\_\_

Stone suppliers, architects, landscape architects, designers, contractors, artists and others who wish to be listed. Description of services and/or products (40 words or less)

---



---



---



---



---



---



---



---

*NEW!*

**CAPS**

*NEW!*



THE VERY BEST QUALITY "SANDWICH BILL" CAPS (UNDERSIDE IS THE SAME COLOR AS THE EMBLEM)

BLACK W/ TAN \_\_\_\_\_

TAN W. BLACK \_\_\_\_\_

(Indicate how many of each)

\$25 (includes shipping)



**T-SHIRTS**

BEST QUALITY 100% PRE-SHRUNK COTTON SHIRTS

SIZES: L, X, XXL

PRICE: \$20 US (XXL - \$22) + \$2.50 POSTAGE PER SHIRT (\$10 OVERSEAS)

**IWA•ROCK**

LIGHT GREY ON DARK BLUE-GREY

SIZE \_\_\_\_\_ NUMBER \_\_\_\_\_

**STONEXUS**

WHITE ON BLACK

SIZE \_\_\_\_\_ NUMBER \_\_\_\_\_

**THE STONE FOUNDATION**

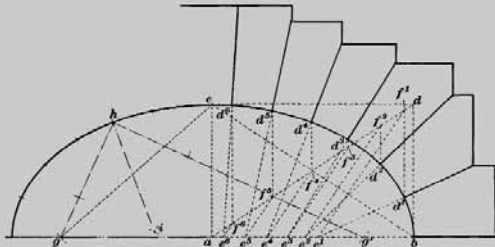
BLACK ON GREY

SIZE \_\_\_\_\_ NUMBER \_\_\_\_\_



- IWA • ROCK -

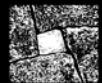
Fig. 55.



**THE STONE FOUNDATION**

www.stonefoundation.org

100. A method of finding the voussoir points in a true elliptical arch is given in Fig. 96. This shows  $a'$ ,  $a''$ ,  $a'''$ ,  $a''''$ , and  $a''''''$  as the points through which it is desired to draw the joints. Draw tangents to the ellipse at the points  $b$  and  $c$ , intersecting at  $d$ ; also, the lines  $a'd$  and  $b'e$ , draw from  $a'$ ,  $a''$ ,  $a'''$ , etc.; lines intersecting at  $f$  on  $d'e$ , etc. From these points, draw lines perpendicular to  $d'e$  intersecting at  $p$  at  $p'$ ,  $p''$ , etc.; then lines drawn through  $p'$ ,  $p''$ , etc. will be normal to the curve and give the required joints.



**stonexus**